

THE MADISON ROOM

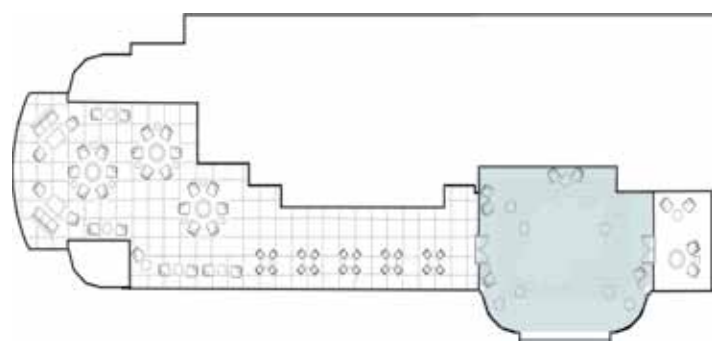
The Madison Room is a versatile room suitable for gatherings between 16 and 24 people. It is an ideal space for board meetings, outfitted with a built-in video monitor and the latest multimedia technology.

Dimensions: 24.8 x 22.4 ft
 Size: 582 sq. ft.
 Height: 8.6 ft.

Private Powder Room

Capacities

Hollow Square: 24
 Conference: 24
 U-Shaped: 18
 Classroom: 20



THE SKY BAR

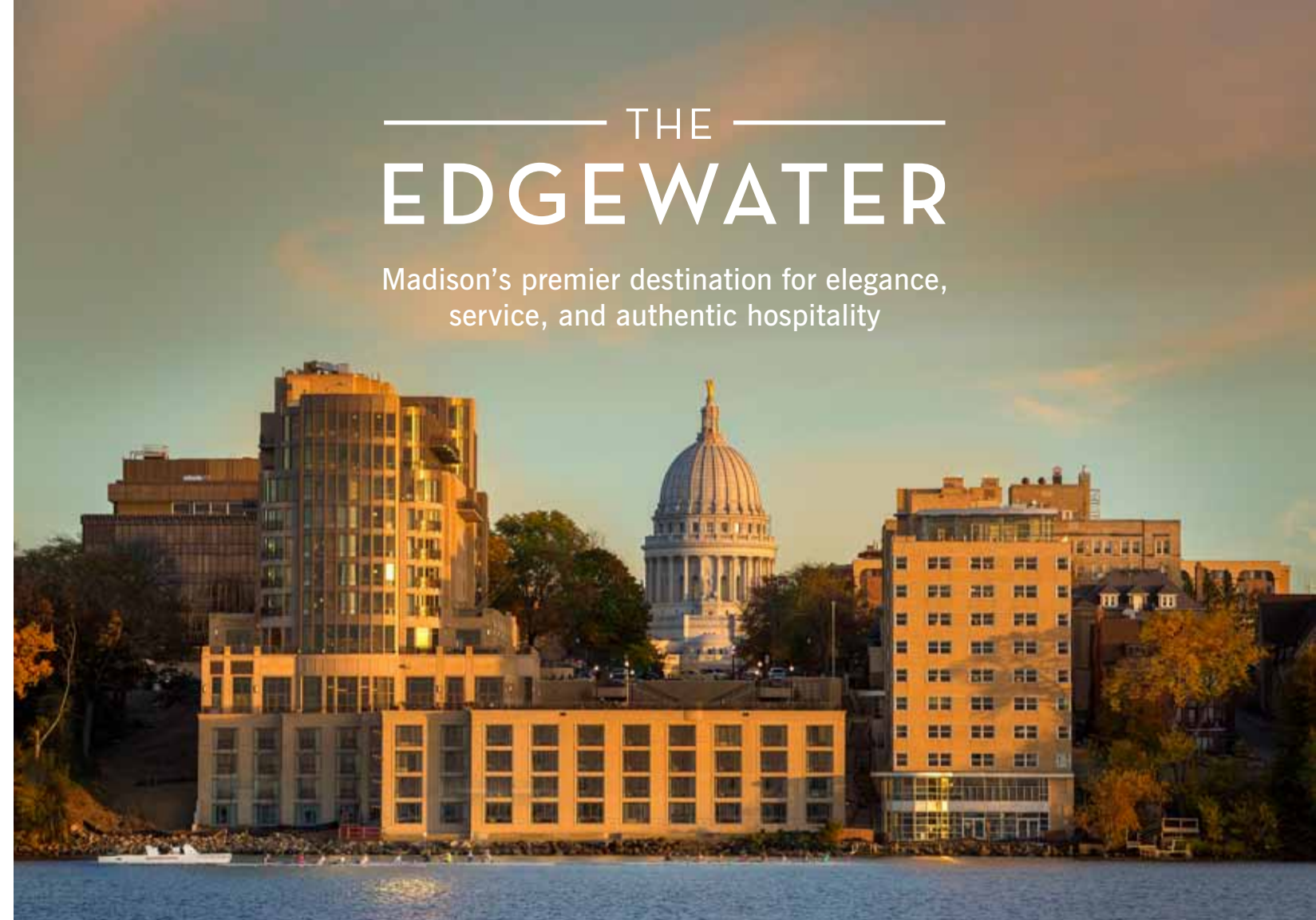
The Sky Bar sits at the top of The Wisconsin Building, offering the very finest views of the lake, city, and University. It can be reserved in combination with other Edgewater venues or individually.

Size: 1,535 sq. ft.
 Height: 9.5 ft.

Capacities

Reception: 80
 Seated Dining: 50

Capacities and seating for all venues are an approximation based on factors such as table size and room configuration.



THE EDGEWATER

Madison's premier destination for elegance, service, and authentic hospitality

To learn more about our private dining spaces, please see theedgewater.com/meetings/our-venues/ and visit theedgewater.com/meetings/plan-an-event/ to fill out our meetings RFP.



Corporate Meetings and Events at The Edgewater

With a grand ballroom like no other, a unique outdoor Plaza, private dining areas, and two event spaces atop each of our hotel towers, The Edgewater is the most versatile and desirable venue for events of all sizes, from a brunch with the board to a company meeting for 500.



THE EDGEWATER

Our Meeting Venues

The Edgewater is proud to offer unique and flexible event spaces, both indoors and outdoors, with almost every square foot providing uninterrupted views of Lake Mendota.

INDOOR SPACE: 14,500 square feet

OUTDOOR SPACE: 30,500 square feet

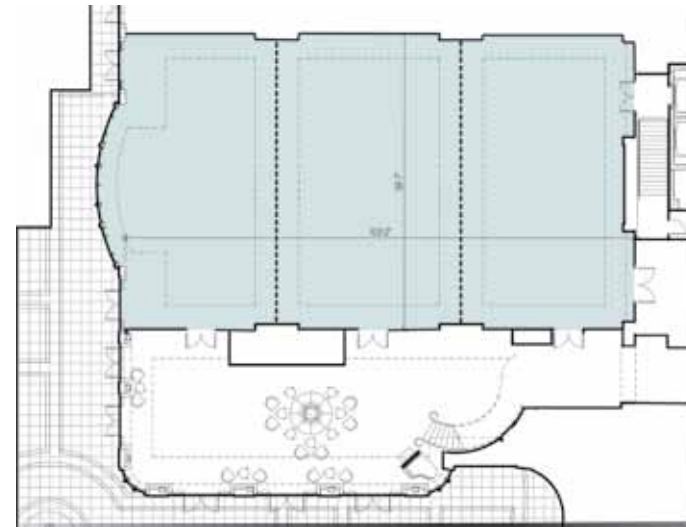
GRAND BALLROOM: 6,150 square feet

BREAKOUT ROOMS: 7

MAXIMUM INDOOR SEATING CAPACITY: 500

MAXIMUM OUTDOOR SEATING CAPACITY: 500

SPECIAL EVENT SPACES: 4

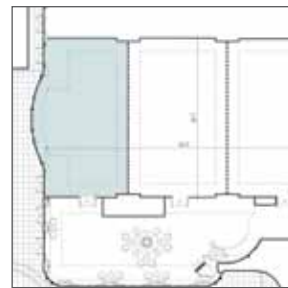


THE GRAND BALLROOM

The Grand Ballroom's 6,150 square feet of flexible event space, 16-foot windows with sweeping views of Lake Mendota, and sophisticated, inviting room finishes make it one of the most memorable event spaces in the Midwest.

Dimensions 103.1 x 59.5 ft.
Size 6,150 sq. ft.
Height 16 ft.

Capacities
Reception 780
Theatre 650
Banquet Rounds 440
Classroom 360



GRAND ROOM A

Dimensions 30.7 x 59.5 ft.
Size 1,850 sq. ft.

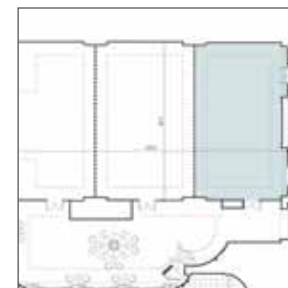
Capacities
Reception 230
Theatre 200
Banquet Rounds 120
Classroom 110
U-Shaped 40
Hollow Square 48



GRAND ROOM B

Dimensions 37.3 x 59.5 ft.
Size 2,223 sq. ft.

Capacities
Reception 300
Theatre 230
Banquet Rounds 160
Classroom 120
U-Shaped 42
Hollow Square 52

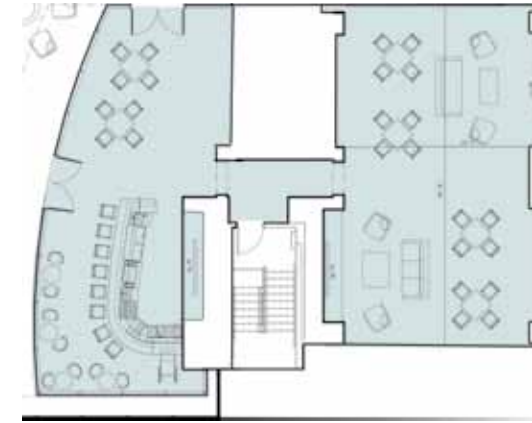


GRAND ROOM C

Dimensions 35.0 x 59.5 ft.
Size 2,090 sq. ft.

Capacities
Reception 250
Theatre 220
Banquet Rounds 140
Classroom 110
U-Shaped 42
Hollow Square 52

Capacities and seating for all venues are an approximation based on factors such as table size and room configuration.



THE RED CROWN CLUB

The Red Crown Club is the capstone to the renovation of the historic Langdon Building. It's an elegant, versatile event space, suitable for private dinners, board meetings, and other corporate events.

Dimensions 38.6 x 22.0 ft.
Size 2,835 sq. ft.
Height 9.5 ft.

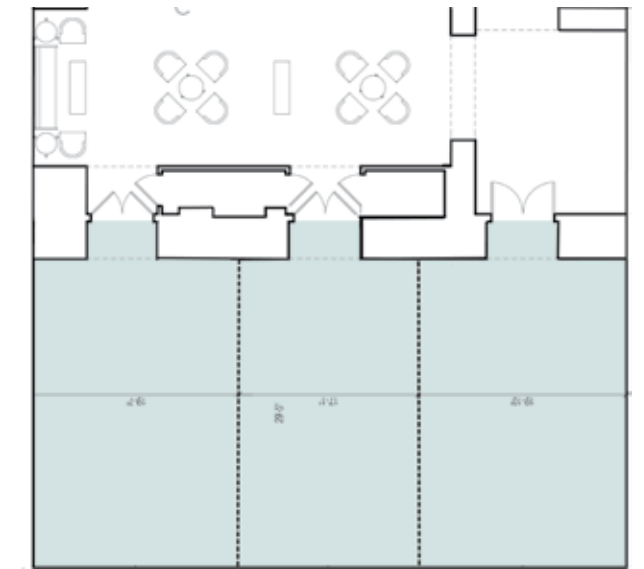
Capacities
Reception 100
Seated dining 50
Conference 25

THE MENDOTA BALLROOM

The Mendota Ballroom boasts 1,660 square feet of event space, the perfect size for group functions ranging from 20 to 120 guests. The Mendota Ballroom features an attached foyer, The Mendota Gallery, ideal for coffee breaks or cocktail receptions. The Mendota Ballroom can also be divided into three sections.

Dimensions 56.5 x 29.4 ft.
Size 1,660 sq. ft.
Height 15.5 ft.

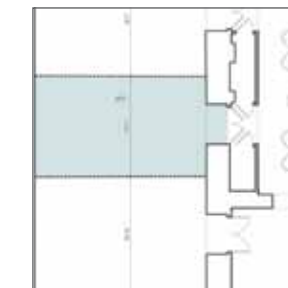
Capacities
Reception 200
Theatre 170
Banquet Rounds 90
Classroom 70



MENDOTA A

Dimensions 19.6 x 29.4 ft.
Size 577 sq. ft.

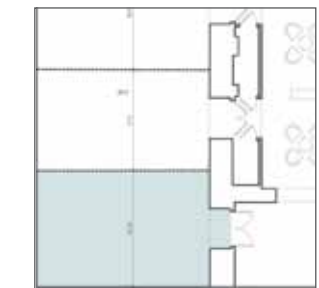
Capacities
Reception 100
Theatre 48
Banquet Rounds 30
Classroom 25
Hollow Square 20
Conference 20
U-Shaped 16



MENDOTA B

Dimensions 17.1 x 29.4 ft.
Size 502 sq. ft.

Capacities
Reception 100
Theatre 48
Banquet Rounds 24
Classroom 20
Hollow Square 20
Conference 20
U-Shaped 16



MENDOTA C

Dimensions 19.9 x 29.4 ft.
Size 584 sq. ft.

Capacities
Reception 100
Theatre 48
Banquet Rounds 30
Classroom 25
Hollow Square 20
Conference 20
U-Shaped 16

Capacities and seating for all venues are an approximation based on factors such as table size and room configuration.